

JACKSON'S
ARTIST ACRYLIC
COLOUR

Jackson's

Our stunning range of acrylics are a heavy/medium body paint that thins out beautifully and mixes well with other brands.

These beautiful colours are formulated with the finest artist grade acrylic resin and the highest quality lightfast pigments. They offer incredible strength and intensity, with a consistency that's perfect for brushing out flat and retains its structure for impasto work.

KEY

Series

Price bands no. ①-⑨

Pigment index

Colour index name for example PW6

Lightfastness

- △ Fugitive
- ⚡ Fair
- ☀ Good
- ☀☀ Excellent

Transparency

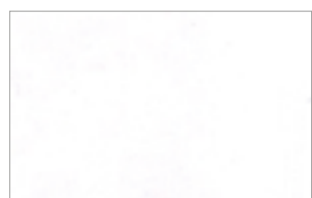
- Transparent
- ◐ Semi Transparent
- ◑ Semi Opaque
- Opaque

Extended pigment index

P[01]: PB29 PB15:3 PW6 PR112 PR122
P[02]: PB29 PW6 PB15:3 PY3
P[03]: PB29 PB15:3 PW6 PV23 PY3
P[NA]: not available

Limited colours

Some sizes are only available in certain colours marked as shown



201 · Titanium White
① PW6 ☀ ●



208 · Primrose Yellow
④ PY53 ☀ ●



210 · Cadmium Yellow Pale Gen.
③ PY35 ☀ ●



211 · Lemon Yellow
② PY3 ☀ ●



214 · Cadmium Yellow Med. Hue
② PY3 PY73 ⚡ ①



213 · Cadmium Yellow Genuine
③ PY35 ☀ ●



216 · Cadmium Yellow Deep Gen.
③ PY35 ☀ ●



220 · Cadmium Orange Genuine
③ P020 ☀ ●



221 · Orange/Red
③ P05 ☀ ①



223 · Cadmium Red Genuine
④ PR108 ☀ ●



224 · Cadmium Red Hue
② PR112 ☀ ①



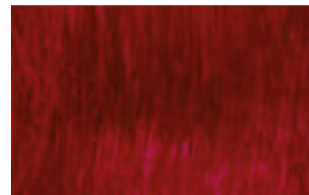
231 · Cadmium Red Deep Genuine
③ PR108 ☀ ●



234 · Crimson
③ PR112 PR122 ☀ ①



236 · Alizarin Crimson Hue
② PR112 PR12 ☀ ①



237 · Magenta
④ PR122 ☀ ①



235 · Naphthol Red
② PR12 ☀ ●



238 · Rose Madder Quinacridone
③ PV19 ☀ ①



239 · Violet
③ PV23 ☀ ①



240 · Ultramarine Violet Hue
③ PB29 PB15:3 PW6 ☀ ①



242 · Phthalo Blue (Red Shade)
② PB15:1 ☀ ○



243 · Phthalo Blue (Green Shade)
② PB15:3 ☀ ○



249 · French Ultramarine Blue
① PB29 ☀ ○



253 · Cobalt Blue Genuine
④ PB28 ☀ ●



252 · Cobalt Blue Hue
② P[01] ☀ ●



261 · Cerulean Blue Genuine
④ PB35 PW6 ☀ ●



260 · Cerulean Blue Hue
② P[02] ☀ ●



270 · Turquoise
② PB15:3 PG7 PW6 ☀ ●



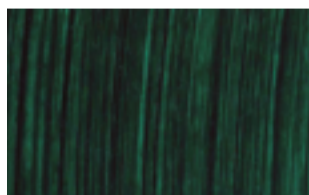
273 · Oxide of Chromium
③ PG17 ☀ ●



272 · Emerald Green Hue
② PY3 PG7 ☀ ①



274 · Phthalo Green
② PG7 ☀ ①



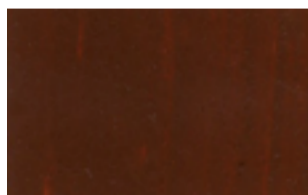
278 · Hooker's Green
② PG7 PBk7 PBk11 ☀ ①



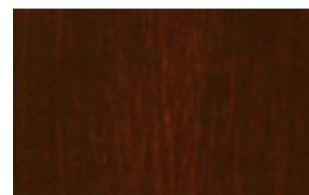
286 · Yellow Ochre
① PY42 ☀ ●



290 · Raw Sienna
① PB7 ☀ ○



292 · Burnt Sienna
① PB7 ☀ ●



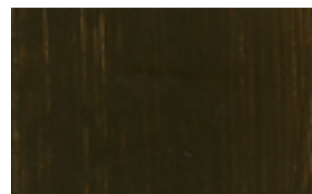
294 · Mars Brown
① PB7 PY42 ☀ ●



296 · Venetian Red
① PR101 ☀ ●



312 · Indian Red
① PR101 ☀ ●



320 · Raw Umber
① PB7 ☀ ○



326 · Burnt Umber
① PB7 ☀ ①



340 · Payne's Grey
② PB29 PB7 PBk7 PBk11 ☀ ①



352 · Black
① PBk11 PBk7 ☀ ●