

JACKSON'S
PROFESSIONAL OIL
COLOUR

Jackson's

Jackson's Professional Oils are made with an even greater pigment load than our Artist Oils range.

Our Professional Oil paints are made by skilled artisans using the finest grade pigments and the purest refined oils we can source. You will find our paints are luminous, vibrant, and full of character. The colours in this range are made to enhance the natural beauty and character of the each pigment.



202 · Titanium White (Linseed)
① PW6 PW4 ☼ ●



203 · Titanium White (Safflower)
① PW6 PW4 ☼ ●



205 · Zinc White
① PW4 PW6 ☼ ●



206 · Unbleach. Titanium White
① PW6.1 ☼ ●



216 · Cadmium Yellow Lemon
④ PY35 ☼ ●



224 · Bright Yellow Lake
① PY3 ☼ ①



234 · Cadmium Yellow Genuine
④ PY35 ☼ ●



241 · Yellow Lake
② PY73 ☼ ①



256 · Cadmium Yellow Deep Gen.
④ PY35 ☼ ●



262 · Indian Yellow Hue
② PY83 ☼ ①



269 · Cadmium Orange
④ P020 ☼ ●



275 · Cadmium Red Light Gen.
④ PR108 ☼ ●



279 · Cadmium Red Genuine
④ PR108 ☼ ●



286 · Naphthol Vermillion
③ PR188 ☼ ①



292 · Cadmium Red Deep Gen.
④ PR108 ☼ ●



525 · Brilliant Pink
② P[04] ☼ ●



304 · Alizarin Crimson
③ PR83 ☼ ①



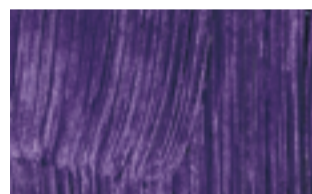
317 · Quinacridone Magenta
③ PR122 ☼ ①



333 · Violet Dioxazine
③ PV23 ☼ ①



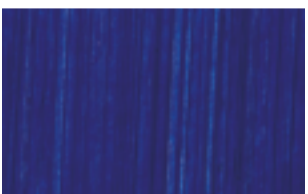
670 · Maganese Violet
③ PV16 ☼ ①



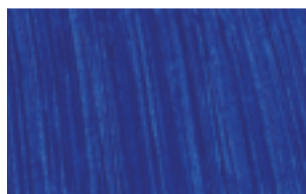
335 · Ultramarine Violet
② PV15 ☼ ①



342 · Phthalo Blue
② PB15:3 ☼ ①



350 · Ultramarine Blue (RS)
① PB29 ☼ ①



362 · Cobalt Blue Genuine
⑤ PB28 ☼ ①



544 · King's Blue Deep
② PB29 PW6 PW4 ☼ ●



371 · Kings Blue Light
② PB29 PW6 PW4 ☼ ●



370 · Cerulean Blue Genuine
⑤ PB35 ☼ ●



377 · Prussian Blue
① PB27 ☼ ①



678 · Emerald Green
② PG7 PY3 PW6 PW4 ☼ ●



674 · Indigo
② PB15:3 PBk7 PV19 ☼ ①



384 · Chrome Oxide Green
③ PG17 ☼ ●



391 · Phthalo Green
② PG7 ☼ ①



393 · Phthalo Turquoise
② PG7 PB5.3 PW4 PW6 ☼ ●



398 · Terre Verte
① PG23 ☼ ①



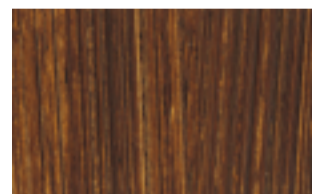
512 · Sap Green
② PY3 PG7 PBr7 ☼ ●



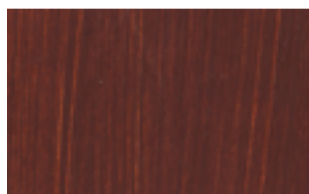
395 · Viridian Green
④ PG18 ☼ ①



404 · Yellow Ochre
① PY42 ☼ ●



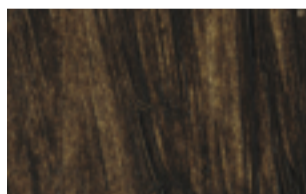
410 · Raw Sienna
① PBr7 ☼ ①



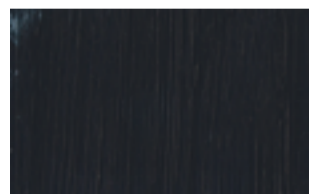
422 · Burnt Sienna
① PBr7 ☼ ●



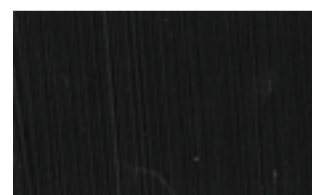
430 · Burnt Umber
① PBr7 ☼ ①



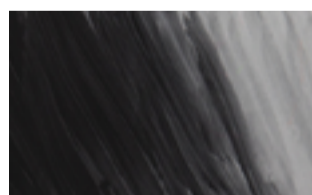
428 · Raw Umber
① PBr7 ☼ ①



434 · Payne's Grey
① PB29 PBk9 PY42 ☼ ①



440 · Ivory Black
① PBk9 ☼ ●



671 · Lamp Black
① PBk7 ☼ ●

KEY

Series

Price bands no. ①-⑥

Pigment index

Colour index name for example PW6

Lightfastness

- △ Fugitive
- ⚡ Fair
- ☼ Good
- ☼ Excellent

Transparency

- Transparent
- ① Semi Transparent
- Semi Opaque
- Opaque

Extended pigment index

P[01]: PY42 PV19 PW6 PW4
P[02]: PY3 PB29 PB15:3 PW6
P[03]: PY3 PY73 PB15:3 PW6
P[NA]: not available